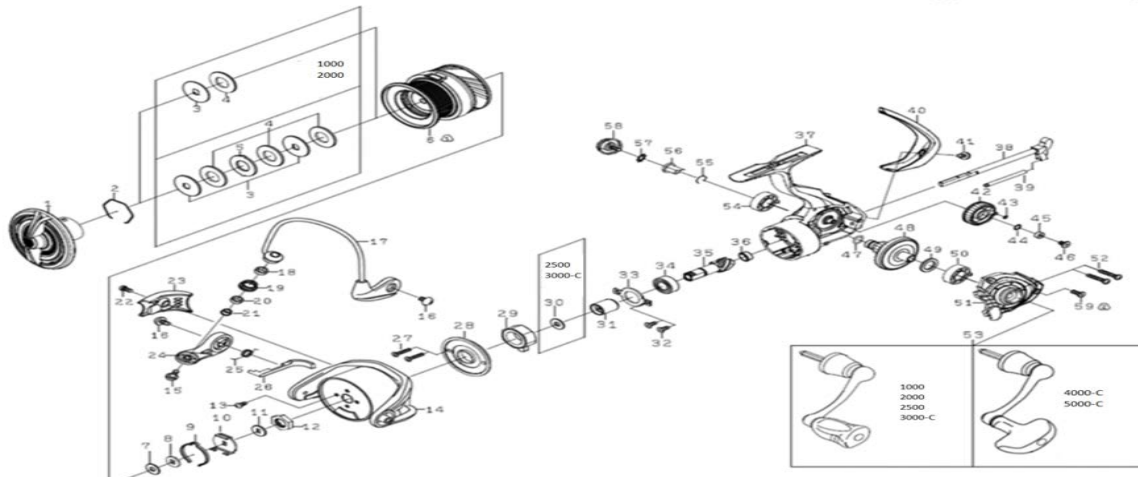


\*Please order by parts number, not key number.



Key	CFLT1000 Part No	Description	CFLT2000 Part No	CFLT2500 Part No	CFLT3000-C Part No	CFLT4000-C Part No	CFLT5000-C Part No
1	Q52-7501	DRAG KNOB	Q52-7501	Q52-0101	Q52-0101	Q52-4401	Q52-4401
2	Q34-6101	DRAG RING	Q34-6101	Q34-6101	Q34-6101	Q34-6101	Q34-6101
3	J54-7001	DRAG DISK WASHER	J54-7001	Q62-1901	Q62-1901	Q62-1901	Q62-1901
4	J54-6801	DRAG WASHER	J54-6801	J54-6801	J54-6801	J54-6801	J54-6801
5	-----	-----	-----	-----	-----	-----	-----
2~6	Q58-6901	SPOOL	Q58-7101	Q58-2801	Q58-3001	Q58-5801	Q58-6001
7	E39-8003	SPOOL WASHER (A)	E39-8003	E39-8003	E39-8003	E39-8003	E39-8003
8	Q34-8502	SPOOL WASHER (B)	Q34-8502	Q34-8502	Q34-8502	Q34-8502	Q34-8502
9	Q45-7701	CLICK LEAF SPRING	Q45-7701	H41-6101	H41-6101	H41-6101	H41-6101
10	Q45-7601	CLICK HOLDER	Q45-7601	M02-1401	M02-1401	M02-1401	M02-1401
11	Q34-4001	CLICK HOLDER WASHER	Q34-4001	Q34-4001	Q34-4001	Q34-4001	Q34-4001
12	Q12-2401	ROTOR NUT	Q12-2401	Q12-2401	Q12-2401	Q12-2401	Q12-2401
13	G62-7701	ROTOR NUT SCREW	G62-7701	G62-7701	G62-7701	G62-7701	G62-7701
14	Q52-7001	ROTOR	Q52-7001	Q51-9501	Q51-9501	Q52-3701	Q52-3701
15	G19-5602	ROLLAR SCREW	G19-5602	G19-5602	G19-5602	G19-5602	G19-5602
16	G20-5001	ARM LEVER SCREW	G20-5001	G20-5001	G20-5001	G20-5001	G20-5001
17	Q52-7101	BAIL	Q52-7101	Q51-9601	Q51-9601	Q52-4001	Q52-4001
18	Q20-3401	ROLLER COLLAR (A)	Q20-3401	Q20-3401	Q20-3401	Q20-3401	Q20-3401
19	F62-5005	LINE ROLLER	F62-5005	F62-5005	F62-5005	F62-5005	F62-5005
20	G87-4301	ROLLER COLLAR (B)	G87-4301	G87-4301	G87-4301	G87-4301	G87-4301
21	G15-2502	ROLLER COLLAR (C)	G15-2502	G15-2502	G15-2502	G15-2502	G15-2502
22	G27-0801	ARM LEVER SPRING COVER SC	G27-0801	G27-0801	G27-0801	G27-0801	G27-0801
23	Q27-3602	ARM LEVER SPRING COVER	Q27-3602	Q27-3702	Q27-3702	Q52-3901	Q52-3901
24	G83-8801	ARM LEVER	G83-8801	G83-8801	G83-8801	G83-8801	G83-8801
25	F77-7901	ARM LEVER SPRING	F77-7901	F80-0701	F80-0701	F80-0701	F80-0701
26	Q34-8801	KICK LEVER	Q34-8801	Q34-8401	Q34-8401	Q52-3801	Q52-3801
27	G83-7101	ONEWAY CLUTCH PLATE SCREW	G83-7101	G83-7101	G83-7101	G83-7101	G83-7101
28	Q51-9301	ONEWAY CLUTCH PLATE	Q51-9301	Q51-9301	Q51-9301	Q51-9301	Q51-9301
29	Q30-8301	ONEWAY CLUTCH	Q30-8301	Q30-8301	Q30-8301	Q30-8301	Q30-8301
30	-----	-----	-----	375-8502	375-8502	-----	-----
31	Q19-6101	CLUTCH RING	Q19-6101	Q19-6101	Q19-6101	Q19-6101	Q19-6101
32	Q19-5701	PINION BEARINGPLATE SCREW	Q19-5701	Q19-5701	Q19-5701	Q19-5701	Q19-5701
33	Q19-5601	PINION BEARING PLATE	Q19-5601	Q19-5601	Q19-5601	Q19-5601	Q19-5601
34	G46-7302	PINION BALL BEARING	G46-7302	G46-7302	G46-7302	G46-7302	G46-7302
35	Q58-6701	PINION GEAR	Q58-6701	Q58-2701	Q58-2701	Q58-5701	Q58-5701
36	Q41-9201	PINION COLLAR	Q41-9201	Q41-9201	Q41-9201	Q41-9201	Q41-9201
37	Q52-6401	BODY	Q52-6401	Q51-8801	Q51-8801	Q52-1701	Q52-1701
38	Q52-6501	MAIN SHAFT	Q52-6501	Q51-8901	Q54-5301	Q52-1801	Q52-1801
39	Q58-3804	OSCILLATING POST	Q58-3804	Q58-3801	Q58-3801	Q58-3802	Q58-3802
40	Q52-6901	REAR CAP	Q52-6901	Q51-9401	Q51-9401	Q52-3601	Q52-3601
41	G27-0801	REAR CAP SCREW	G27-0801	G27-0801	G27-0801	G27-0801	G27-0801
42	Q37-5201	OSCILLATE GEAR	Q37-5201	Q13-9001	Q11-8401	Q35-0901	Q35-0901
43	H77-0601	OSCILLATE GEAR O-RING	H77-0601	H77-0601	H77-0601	G46-6001	G46-6001
44	H12-9201	OSCILLATE GEAR WASHER	H12-9201	H12-9201	H12-9201	H12-9201	H12-9201
45	Q52-0801	OSCILLATE GEAR COLLAR	Q52-0801	Q52-0801	Q52-0801	Q52-0801	Q52-0801
46	Q12-6101	OSCILLATE GEAR SCREW	Q12-6101	Q12-6101	Q12-6101	Q12-6101	Q12-6101
47	G67-0501	DRIVE GEAR O-RING	G67-0501	G67-0501	G67-0501	G46-6001	G46-6001
48	Q37-5901	DRIVE GEAR	Q37-5901	Q34-1901	Q34-1901	Q35-1401	Q35-1401
49	375-8502	DRIVE GEAR WASHER	375-8502	375-8502	375-8502	375-8502	375-8502
50	Q21-0901	DRIVE GEAR BALL BEARING (A)	Q21-0901	Q21-0901	Q21-0901	Q21-0901	Q21-0901
51	Q52-6801	BODY COVER	Q52-6801	Q51-9201	Q51-9201	Q52-2201	Q52-2201
52	G11-5001	BODY COVER SCREW (A)	G11-5001	G11-5001	G11-5001	G11-5001	G11-5001
53	Q52-7701	HANDLE	Q52-7701	Q52-0401	Q52-0401	Q52-4601	Q55-9701
54	H02-2001	DRIVE GEAR BALL BEARING (B)	H02-2001	H02-2001	H02-2001	H02-2001	H02-2001
55	G47-2401	DRIVE GEAR BALL BEARING (B) RING	G47-2401	G47-2401	G47-2401	G47-2401	G47-2401
56	F72-1001	HANDLE COLLAR	F72-1001	F72-1001	F72-1001	F72-1001	F72-1001
57	160-8401	HANDLE WASHER	160-8401	160-8401	160-8401	160-8401	160-8401
58	Q13-2401	HANDLE	Q13-2401	Q13-2401	Q13-2401	Q13-2401	Q13-2401
59	Q34-2701	BODY COVER SCREW (B)	Q34-2701	G11-5001	G11-5001	G11-5001	G11-5001